



four colours

four colours were commissioned in April 2011 by the Olympic Delivery Authority as part of their Arts and Cultural Strategy. They were asked to deliver an artist-led community engagement project with local people in Woolwich using art to explore and respond to a forthcoming commemorative landmark for Woolwich, which will recognise the role the Royal Artillery Barracks played in hosting the Shooting, Paralympic Shooting and Paralympic Archery at the London 2012 Olympic and Paralympic Games.

hello@fourcolours.info



## Foreword

Blue water runs at the foot of Woolwich; blue clothes on a blue balcony.

Green hills cover the common head; green hands grow greens.

Pink (and red and ruby) blood runs through; pink (and orange and red) depth displayed.

Yellow sunflower heads follow the sun – even in winter.

There is a shed, to look out from in, in from out.

A bulls-eye, a target, for feet only.

A Lord, sitting in a pub, talking.

A launderette, colours whirling, clothes clean; then clothes on washing lines, estate-dried, colour blocks in council blocks.

A community garden; community gardeners, dreaming dizzy dreams.

Pea-shooters for pea-picking children.

People relating stories becomes a story relay, artists and makers mixed, washed together in a solid flow of four colours.

In the community garden, where peas grow and strawberries grow, children grow on the stories they are fed, nursery-tended.

In the shared garage, fed and watered, coming-together, communing-together with edible, audible, indelible delights. Some things lasting, some passing. (Pass it on...)

Stella Duffy, 2011.

*Stella Duffy, writer, was born in Woolwich in 1963. She lived in the Ogilby Street flats and went to Woolwich Common Nursery School.*



## Introduction

four colours are a new London based arts partnership. We came together with the ambition of making intelligent art, inspired by the people we meet and the places we find ourselves in.

four colours are four women: Janetka Platun is a visual artist who makes installations and photographic based art. Amanda Westbury is a visual artist specialising in site specific work. Susie Miller is a theatre director and lecturer who specialises in comedy and community engagement and Helen Ball is an arts consultant specialising in audience development and community engagement. We bring different perspectives and agreed on the name four colours to reflect the four colour theorem. This states that 'no more than four colours are required on a map to colour the regions, so that no two adjacent regions have the same colour'. We think that by working together as a four, we create better ways to recognise and illuminate people and place through art.

Our response to the commission was to meet and make symbiotic relationships with local people that centred around them 'hosting' an art event on their estate. This led us into the launderette, into peoples' homes, into the building and garden of the charity Welcare and into the garage of a local family. This booklet is a visual record of moments that occurred during the commission and in particular moments where we think art and people met on the Woolwich Common Estate.



SELF SERVICE LAUNDRY  
& DRY CLEAN

SERVICE WASH  
AVAILABLE





*"It's very good. Everybody talks about it. Everybody likes it. Because everyone wants change and everyone likes colour."*

Theo, launderette owner.

four colours were invited into ground, first and third floor flats of Lawson House where we posed the question *"can we hang our washing out on your balcony?"*

Yvonne from no. 14 recognised us from our previous work in the launderette *"you're the laundry ladies aren't you?"* It set in motion a process of showing the work from within someone's home whilst sharing it with the outside world. As people made their way back from school and work they noticed the four colours hanging from various balconies. Yvonne told us *"it's the best view of the estate from here."*





Head down the hill from Theo's launderette and round the corner into Nightingale Vale and you'll find a thriving community garden that was started by Welcare and Dizzy.

Dizzy told us after the event *"The children now ask me for peas on their way to school, the garden is slowly becoming part of the community."*



Here we created two interactive sheds. Inside the first you hear the sound of arrows flying through the air before hitting their target. In the second holes drilled in the same configuration as those found in a used target, cast shafts of light within.

Entering the sheds involved sharing the experience with someone unknown. It led to conversations *"Is it safer to sit down or stand up?"* or *"who's making that noise?"*

As with all our art interventions around Woolwich the sheds played with the idea of experiencing the outside from within and vice versa. We felt this was relevant given the estate's location right next to Woolwich Common. Many of the residents are able to watch from their windows as the structures for the Games go up.







A target gallery created the perfect competition area adjudicated by Will and Pete from The London Organising Committee of the Olympic Games. Actual targets from the competitions were used.

Strict rules applied:

- Stand behind the rope. (The rope measured exactly a broom and a half's length from the target.)
- Use only fresh peas or peashooter pellets.
- Blow, don't suck.
- The judges' decision is final.

Throughout the project we aimed to target people who are often overlooked in art projects. Using an Olympic sized archery target mat we roamed around Woolwich and invited people to participate, physically placing them in the centre of the work. By doing so we were able to begin a dialogue about their relationship to the forthcoming games.

One local resident commented *"It's just clicked seeing that (meaning our archery mat). The archery is going over there isn't it."*

Who would you trust enough to shoot an apple off your head?

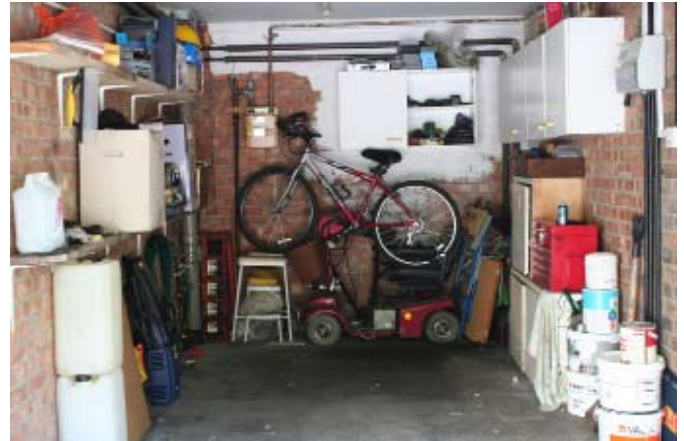
Sachin Tendulkar  
Venus Williams  
Alexander Pushkin  
David Beckham  
My Mum  
Stevie Wonder  
Cupid  
Arjuna - Hindu God  
Robin Hood  
Johnny Depp  
Princess Diana  
Anneka Rice  
Prince Harry  
Only God  
Leon  
Bernie the Bolt  
Lindsey Wagner





## Thanks

Theo at the launderette, Joan who we met there. Seval, Dizzy and all the staff and volunteers at Welcare. John and Tracy, hosts for the final event (their garage pictured below). Bill, Jim and everyone at Woolwich Common Community Centre. Kathy and Angela and everyone at Willow Tree Nursery. Lynne and everyone at The Lord Clyde pub. Phil and everyone at Riverwood. The residents of Lawson House in particular Yvonne at number 14 and her neighbours at number 3, 13, 15 and 41. The staff on the Woolwich Ferry. Ron at Becontree signs. Luke for his technical support. All the residents and shopkeepers on the Woolwich Common Estate. Stella Duffy. Kris and Eurim at Ravensbourne. Claire Gevaux, Sarah Weir, Richard Arnold and Rikki Butler at the ODA. Will, Pete and Hilda at LOCOG. Sara Symington, Dani Brown, Kay Lucas, John Stubbs, Leigh Warmsley at Archery GB. Jason Dunn, Photron and Mark Johnson at Slow Mo.





“... the work has been made, is made of-not-for-the people here. That it is growing work, organic work, listening work. That it is a conversation, a chat, a hanging out” Stella Duffy

© four colours, 2011.